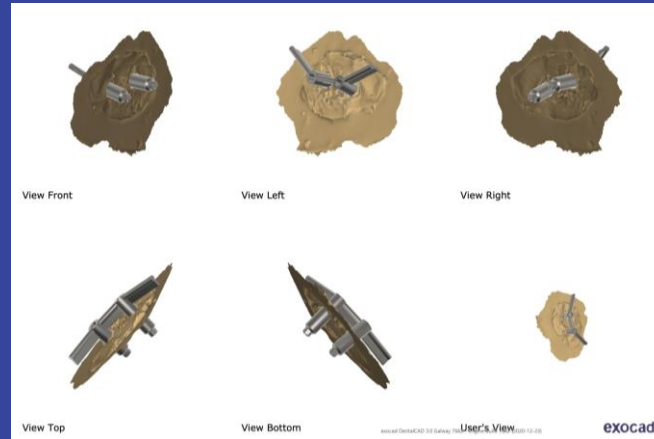


A CASE REPORT

Fabrication of Prosthesis in Free Flap case via Medit Scanner

By:

Dr. Vikram Ahuja



Case Study

Artificial Fixed Ear Placement Via Medit Scanner

Dental Implant placed on Mastoid bone of left side



Transfer placed to form a ZIG



Impression taken with Putty



Cast Information



Implant Locations were scanned with scanning bodies



The Design of the Ear Bar



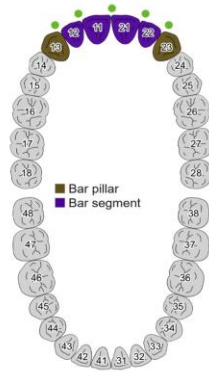
2021-12-02_00378-011

Job date: 12/2/2021 6:26:40 PM
Generated on: 12/2/2021 7:17:50 PM
Dentist name: Default

Implant analog types

13, 23:

MEDI_N33_ZIMMER_TSV(MEDI_N33_ZIMMER_TSV) : A72_TSV35(A



3D PDF (Scale - mouse wheel; Rotate - left mouse button. To print 3D model - enable markups printing)



Different Angles of Ear Bar



2021-12-02_00378-011 - 2D images from various angles



View Front



View Left



View Right



View Top



View Bottom



User's View

exocad DentalCAD 3.0 Galway 766178342 (Rev. 3.0.0) (2020-12-23)

exocad



The Ear Bar was designed Virtually



2021-12-02_00378-011

Job date: 12/2/2021 6:26:40 PM

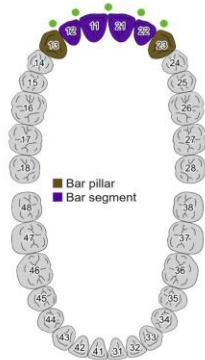
Generated on: 12/2/2021 7:18:22 PM

Dentist name: Default

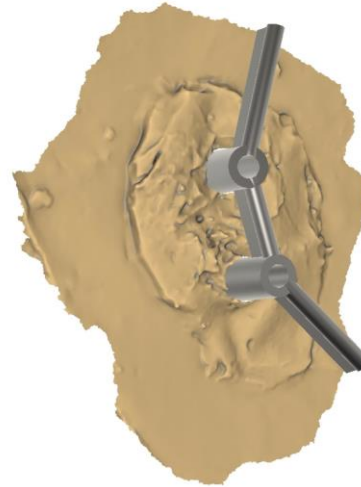
Implant analog types

13, 23:

MEDI_N33_ZIMMER_TSV(MEDI_N33_ZIMMER_TSV) : A72_TSV35(A



3D PDF (Scale - mouse wheel; Rotate - left mouse button. To print 3D model - enable markups printing)



Different Angles of Ear Bar



2021-12-02_00378-011 - 2D images from various angles



View Front



View Left



View Right



View Top



View Bottom



User's View

exocad DentalCAD 3.0 Galway 7663 - 2020-12-23

exocad

Bar was fabricated digitally



Acrylic plate was fabricated for fixation



Rough surface opposite side of acrylic plate for silica ear fabrication



Ear Fabrication



Acrylic plate attached to ear



Acrylic plate was attached to silica ear



Before and After



thank you